



Poppenbouwing 52
4191 NZ Geldermalsen
The Netherlands

VAT: NL007508773B01
IBAN: NL27RABO0321200616
SWIFT: RABONL2U
CoC: 11018516

Date: February 10th, 2020

Subject: Silas release notes V3.10.6.0

Dear Silas user,

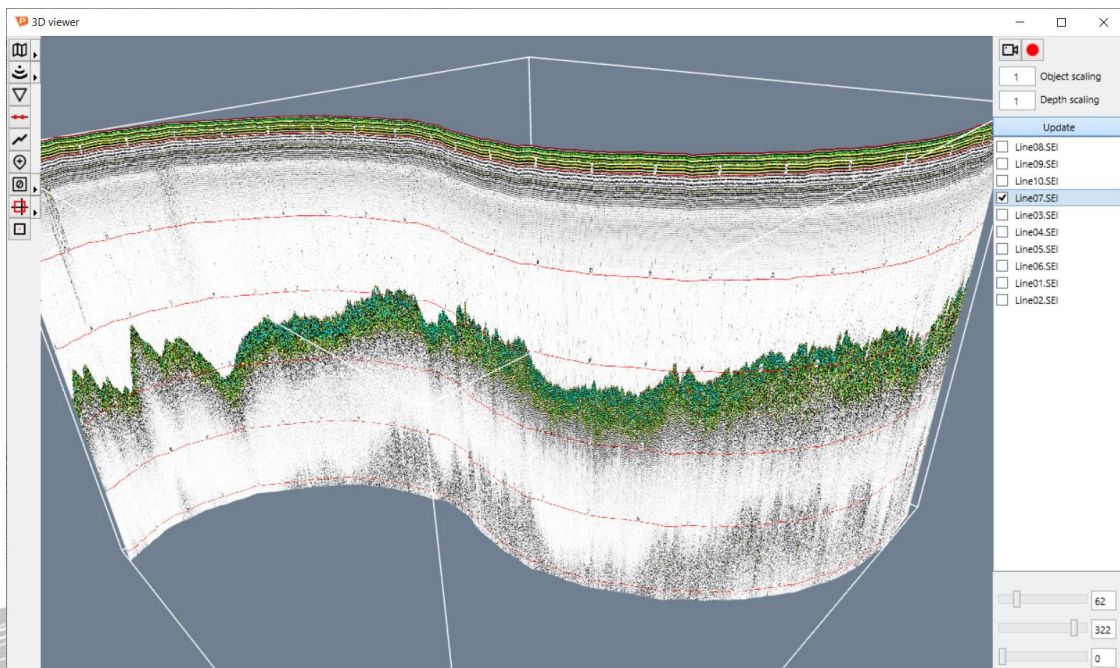
Silas V3.10.6.0 is now available. This release contains improved versions of both Silas Acquisition (V3.10.6.0) and Silas Processing (V3.10.6.0). Stema has added new functionalities to this release as well as addressed some bugs and resolved some issues. If you currently have an active maintenance contract, you can download the release using the following button.

DOWNLOAD SILAS V3.10.6.0

If you currently are not in possession of a maintenance contract and would like to have more detailed information about this maintenance program you can contact our sales department (sales@stema-systems.nl).

The highlights of the new Silas release are:

- New 3D viewer in Silas Processing:





Poppenbouwing 52
4191 NZ Geldermalsen
The Netherlands

VAT: NL007508773B01
IBAN: NL27RABO0321200616
SWIFT: RABONL2U
CoC: 11018516

The new 3D viewer can be used to view lines, multibeam, contacts and groundtruth data in a 3D space.

- Expiry date for rental dongles is now also shown in the License window.

Processing:

- Multiple DXF files can be loaded in at once and display can be turned on/off in the new DXF overview in the Navigation Map.
- DXF files can now be loaded in as theoretical objects and theoretical object can also be loaded in at an adjustable common depth level.
- In the 'Scale Attributes' window the minor scales, major scales and depth label values can now be set to decimal values.
- Sideways scrolling is now possible in the trace window by holding down the shift key while scrolling.
- A legend of the layer list can now be copied to clipboard using the pop-up menu of the 'Layer List' window.

Acquisition:

- Updated serial settings including a 'Load defaults' button in the 'Position input' window.

If there are problems starting the software this might be due to active firewalls blocking the Silas software.

If you have any questions, feedback or inquiries for developments to be made, please inform us as we would gladly try and take this into account for our next release. You can send an e-mail to support@stema-systems.nl.

As Stema Systems is always trying to improve the software it produces we would greatly appreciate it if you could take the time to fill in the questionnaire that accompanies this e-mail, thus ensuring that we can take your feedback into account in the next release.

Stema Systems