



Offshore Energy 2019

- Established in 1986, started as a survey company and gained hands-on experience and know-how
- Innovative solutions company that supplies
 - geophysical, hydrographical and oceanology-related measurement systems
 - related services such as training, installation, and support
- Office in Geldermalsen, the Netherlands
- A worldwide network

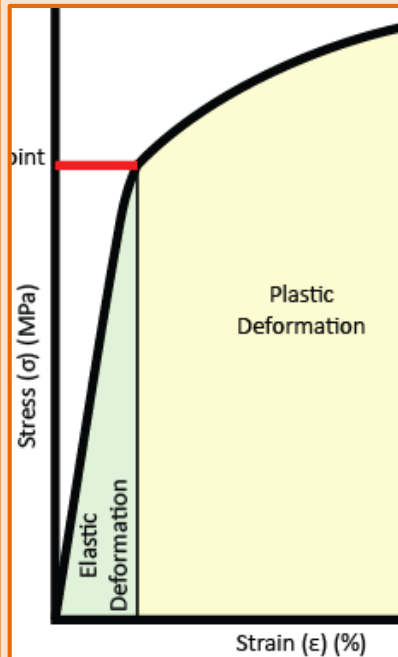


Products and services: RheoTune

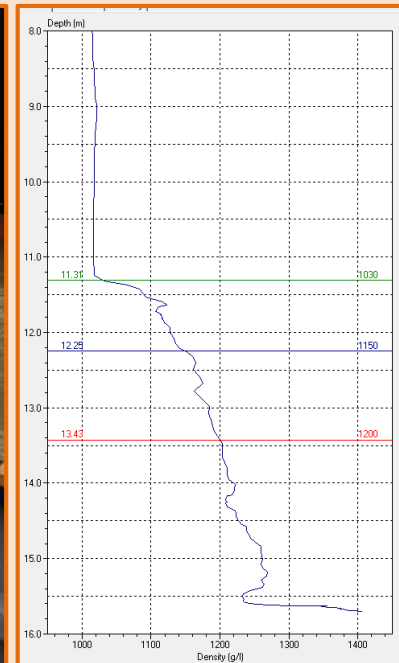
Fluid mud area



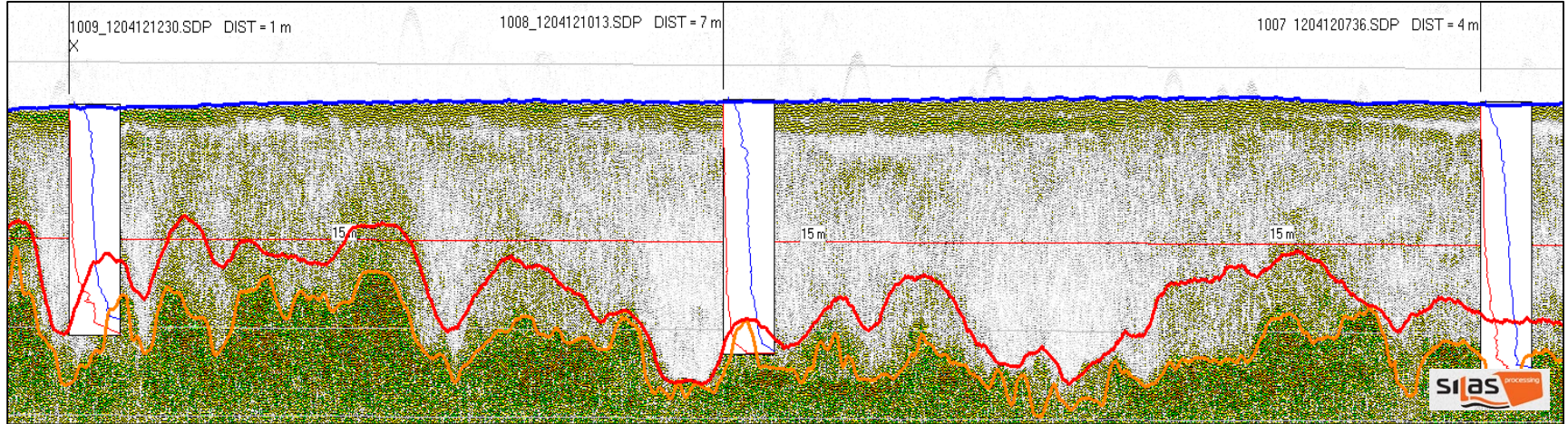
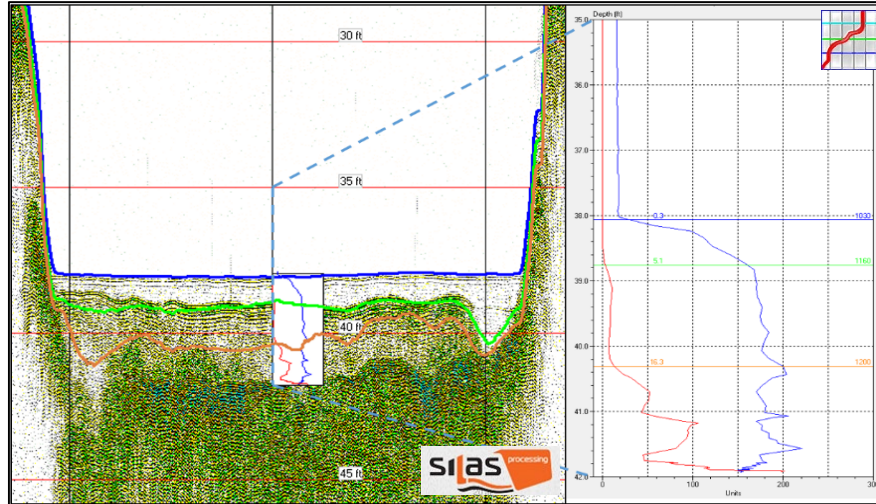
Nautical depth: density and yield stress



RheoTune and corresponding software: RheoSuite

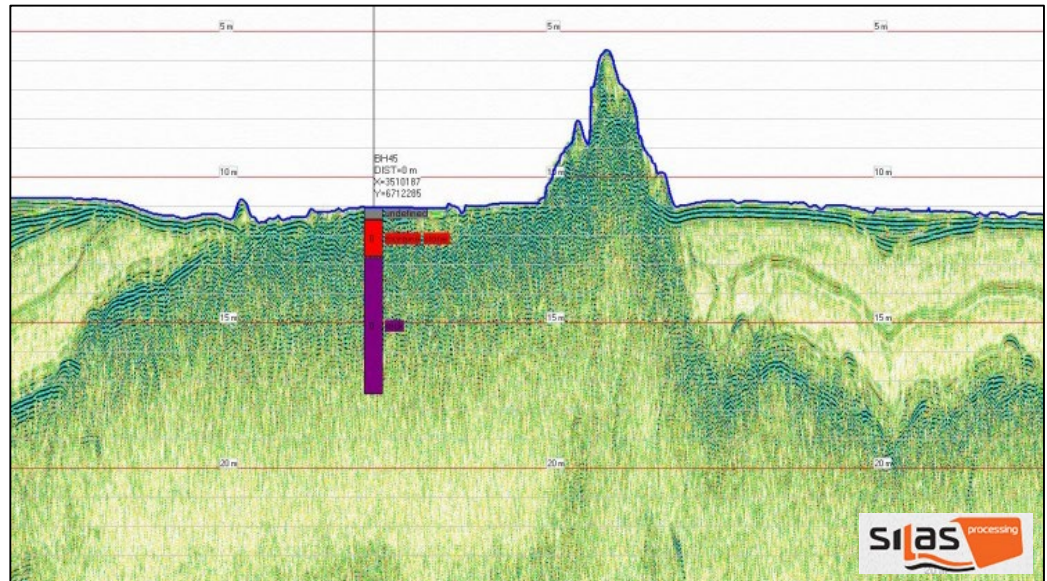
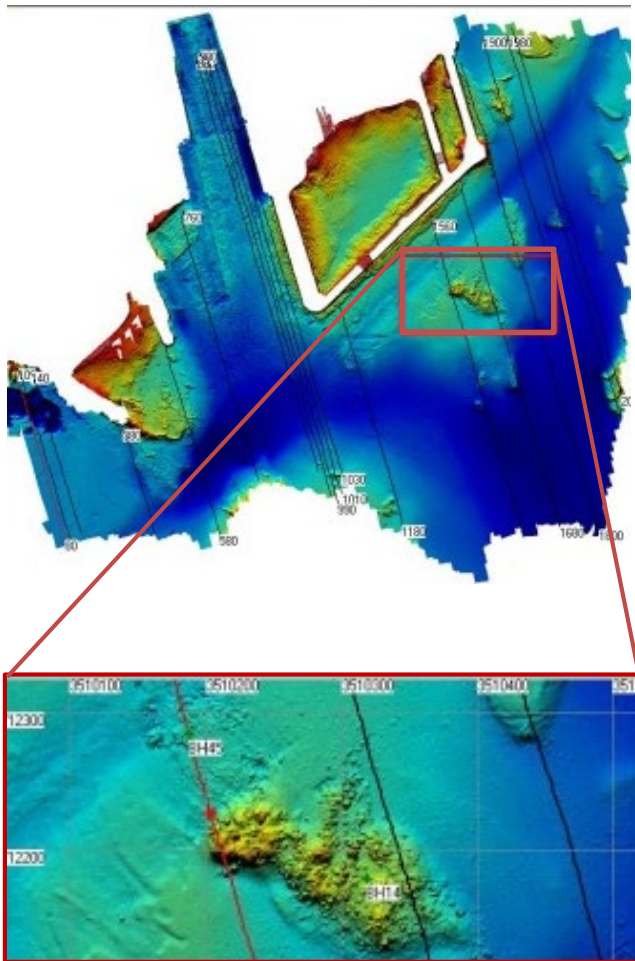


Our solutions: fluid mud survey



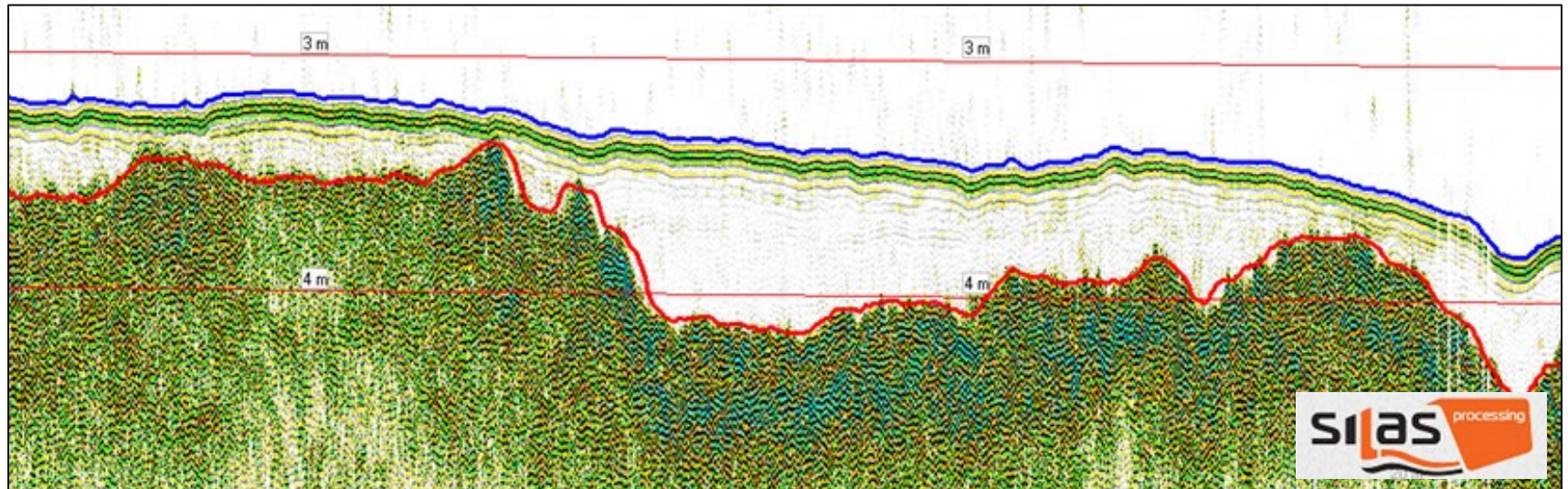
Our solutions: site survey

- Site investigation as a preparation for harbour deepening
- Outcrops of metamorphic rocks and large boulders
- Subbottom profiler-, multibeam-, and borehole data

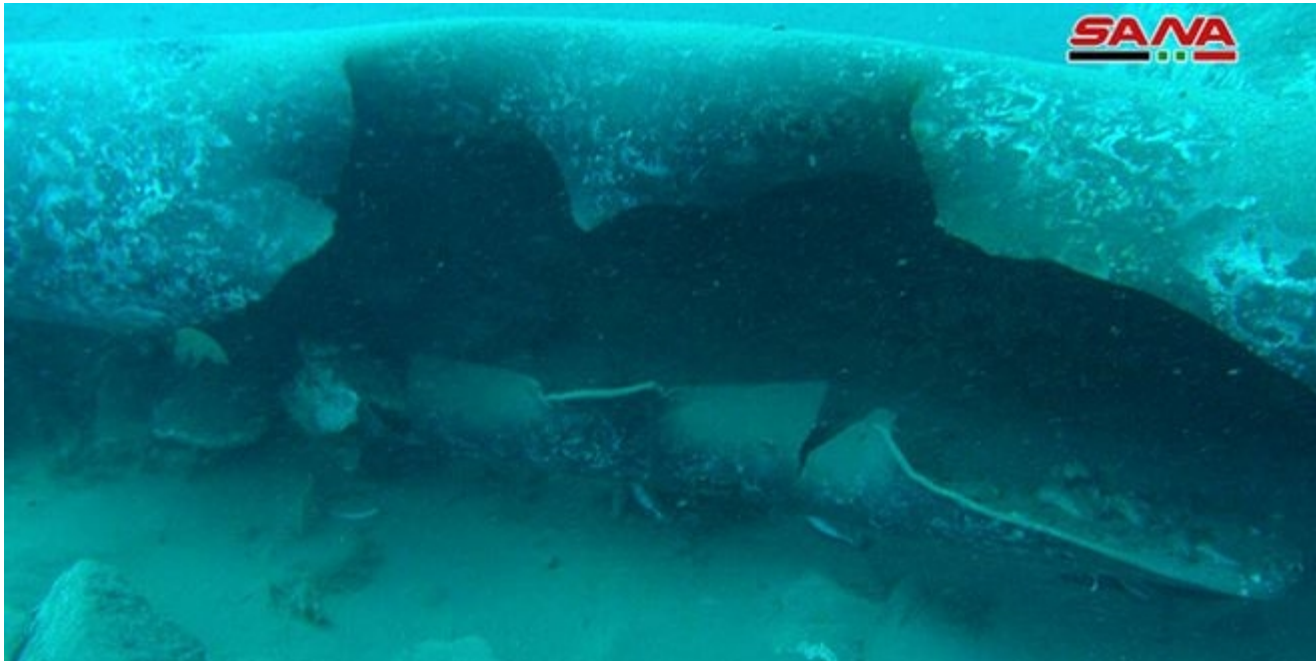




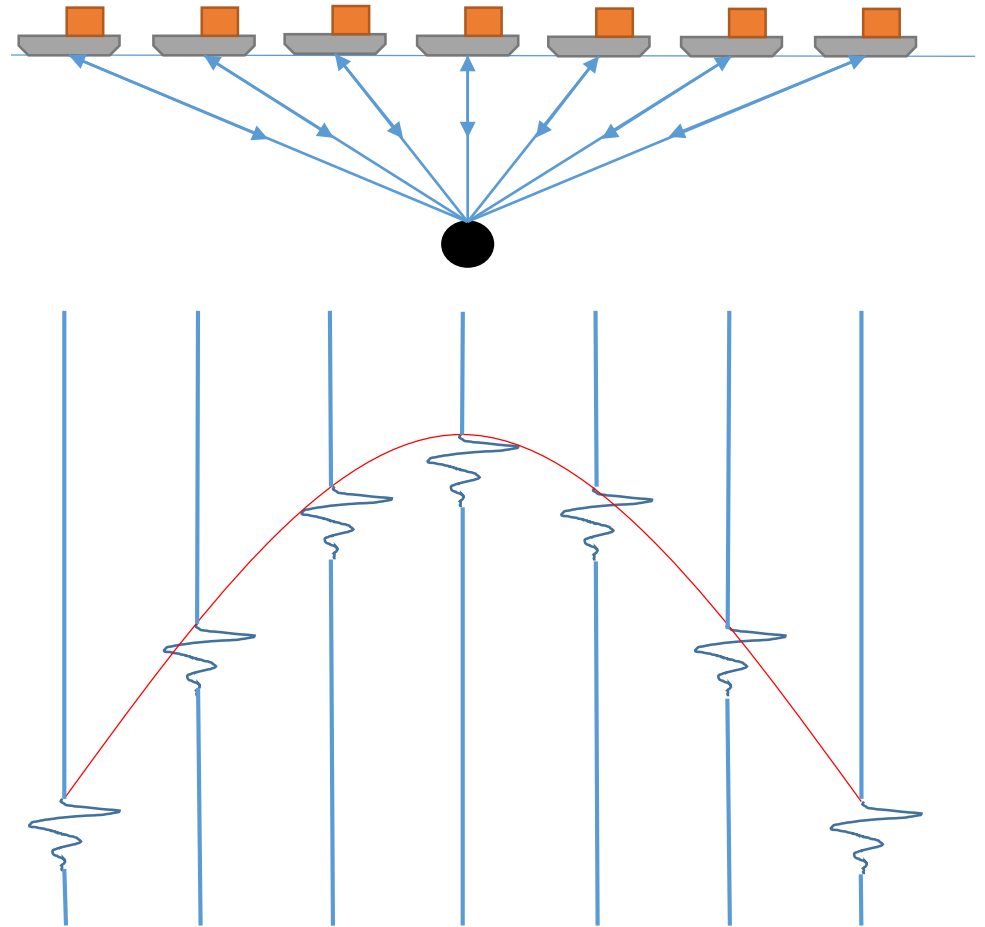
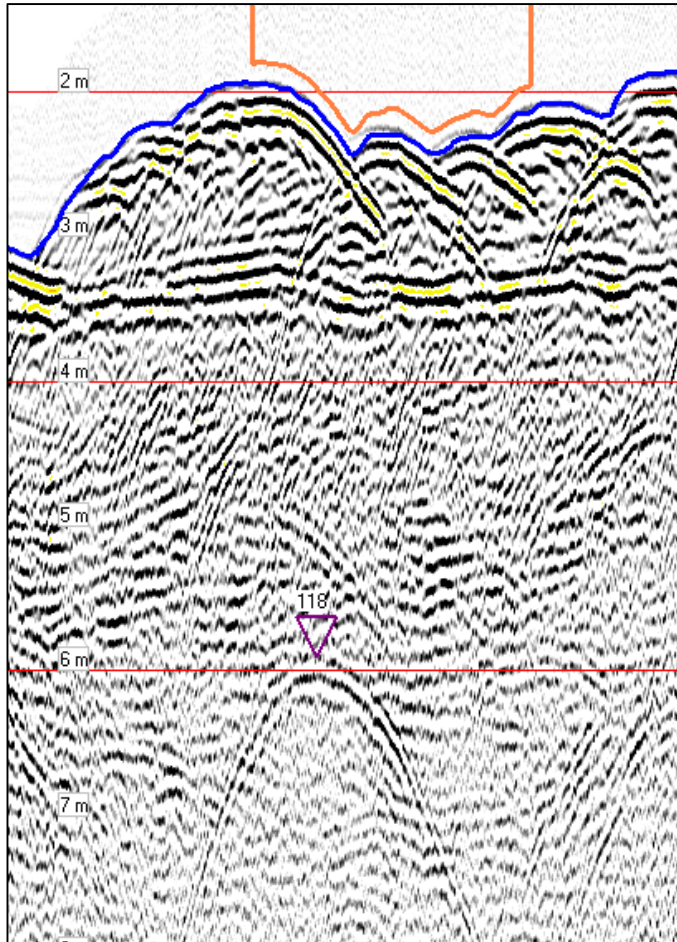
Products and services: Silas



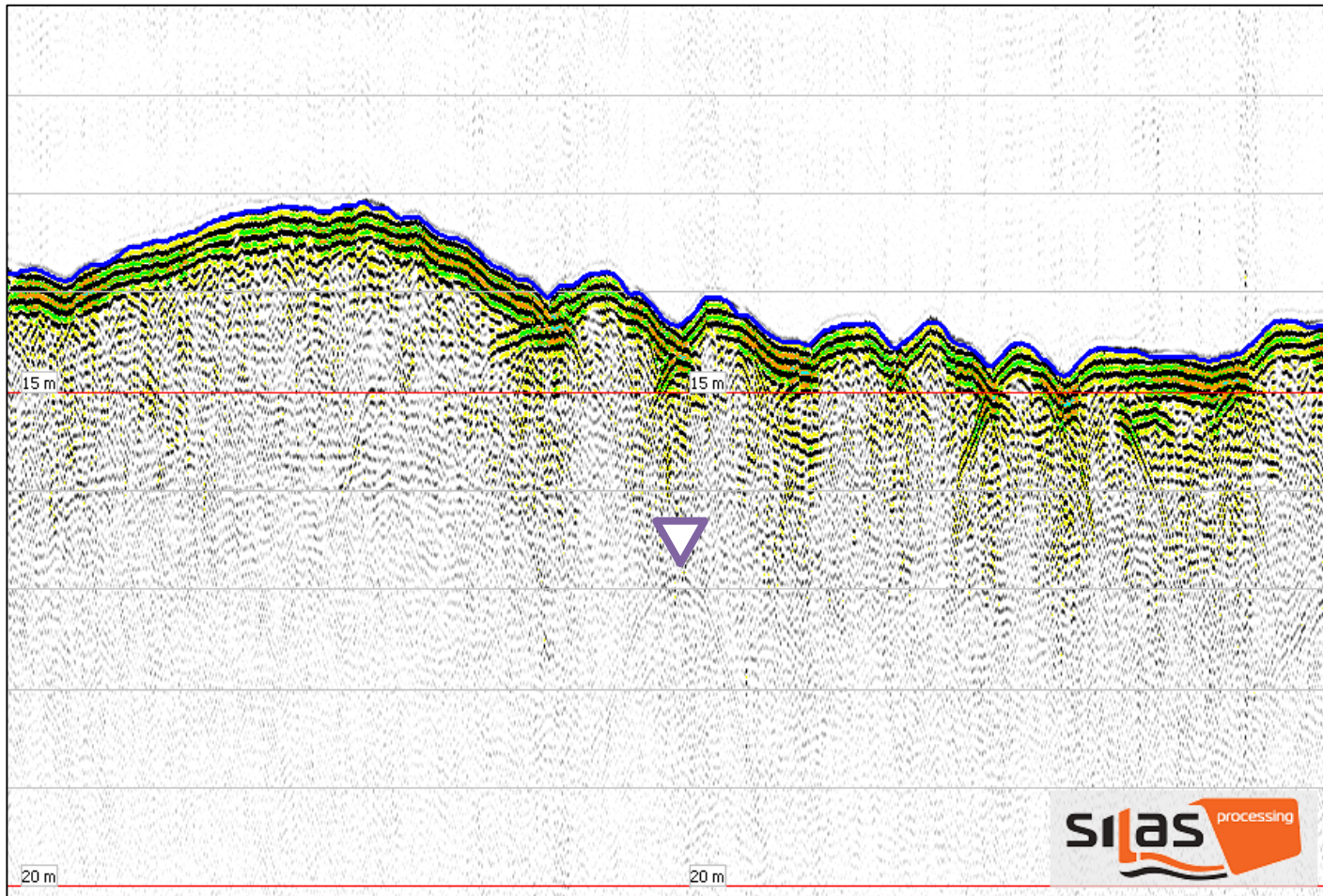
How can you keep them safe if you do not know where they are



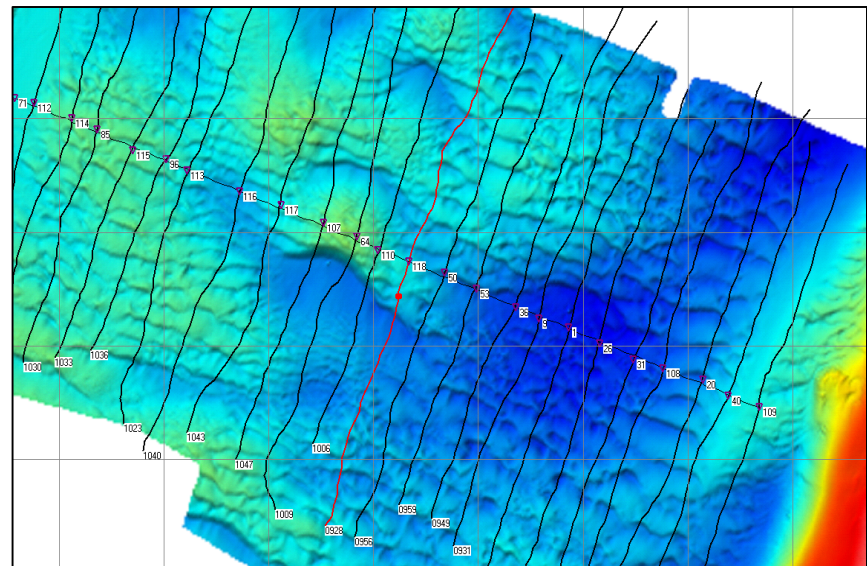
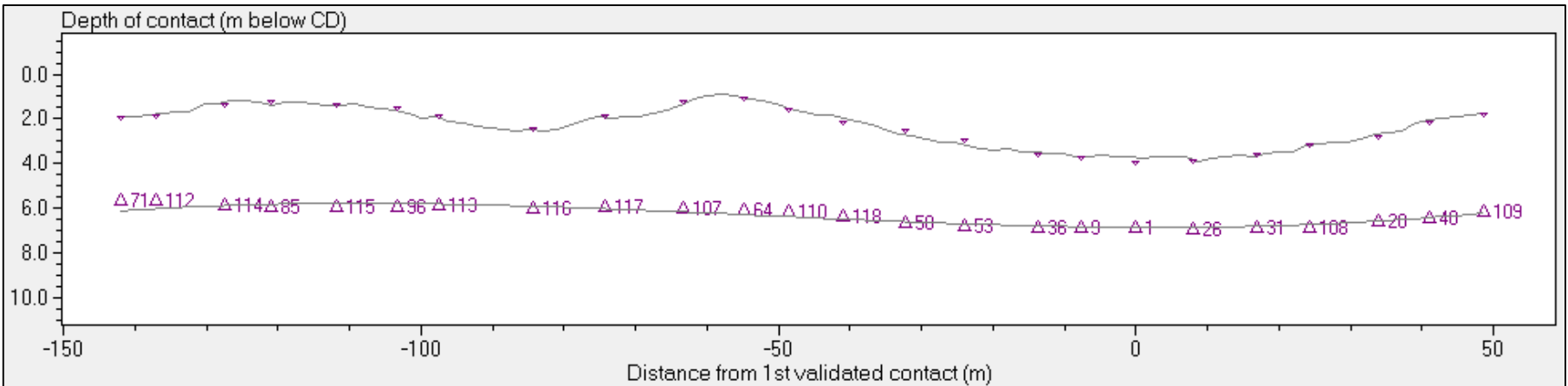
Our solutions: Acoustic Cable detections



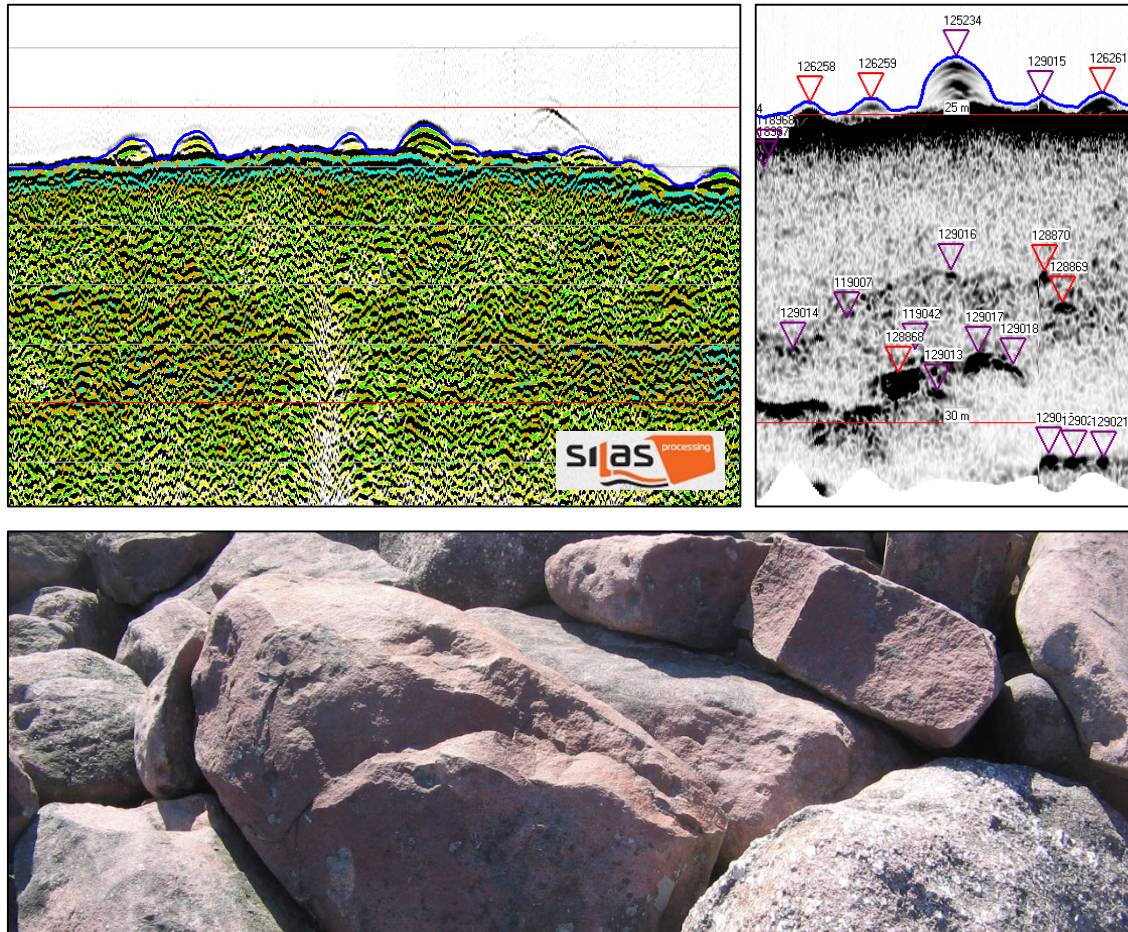
Our solutions: 2D cable detection Oostende, Belgium



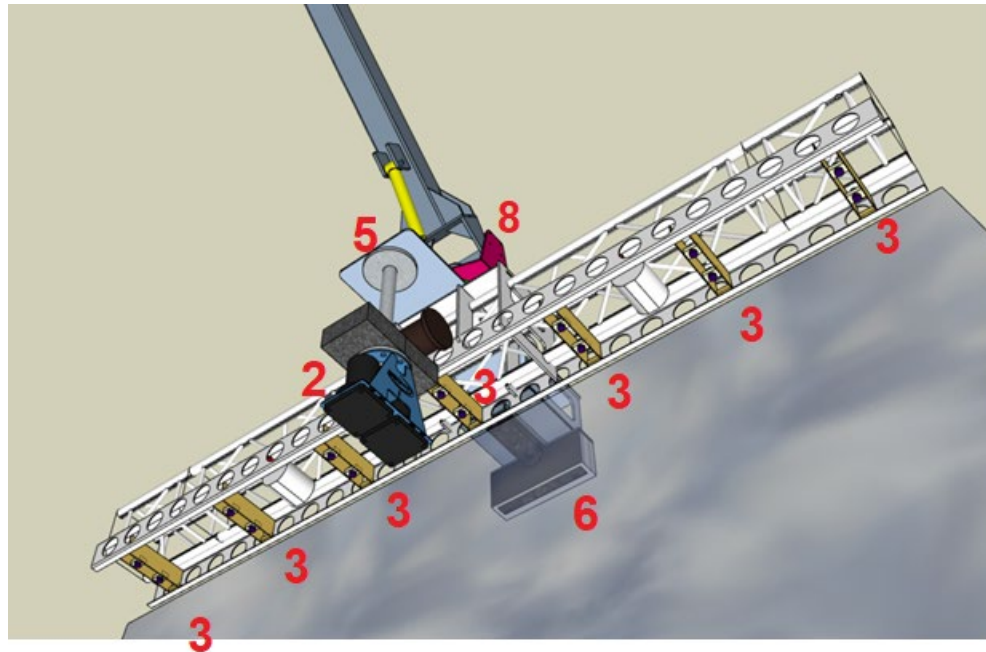
Our Deliverable: 2D Cable Detection



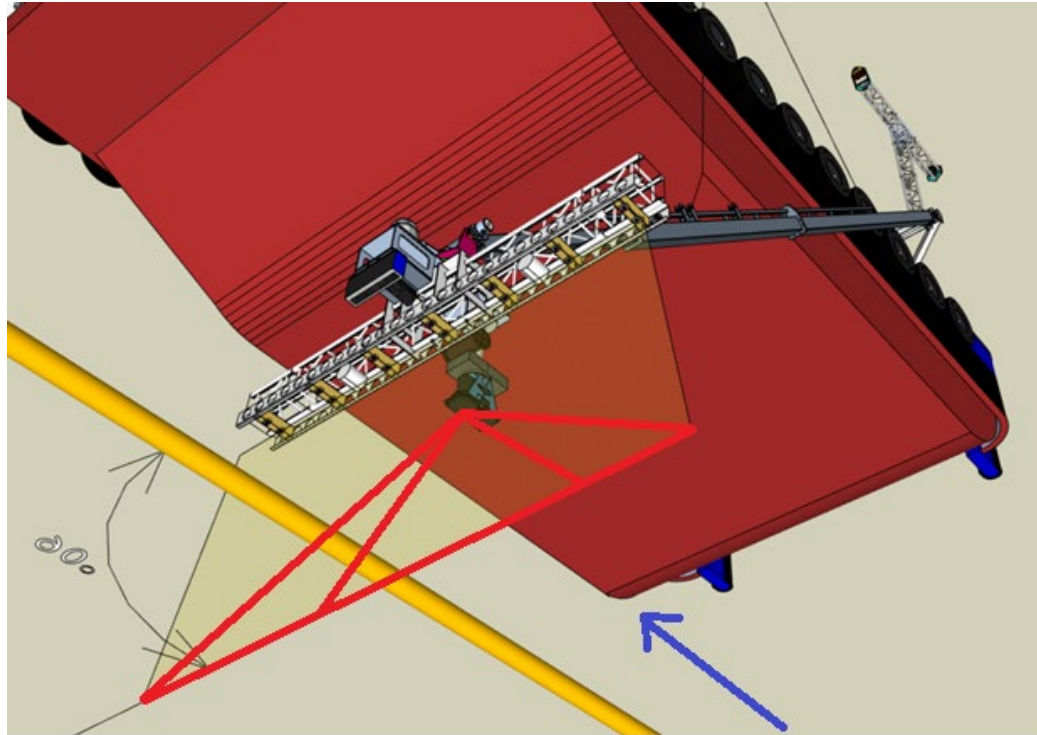
Our solutions: 2D object detection



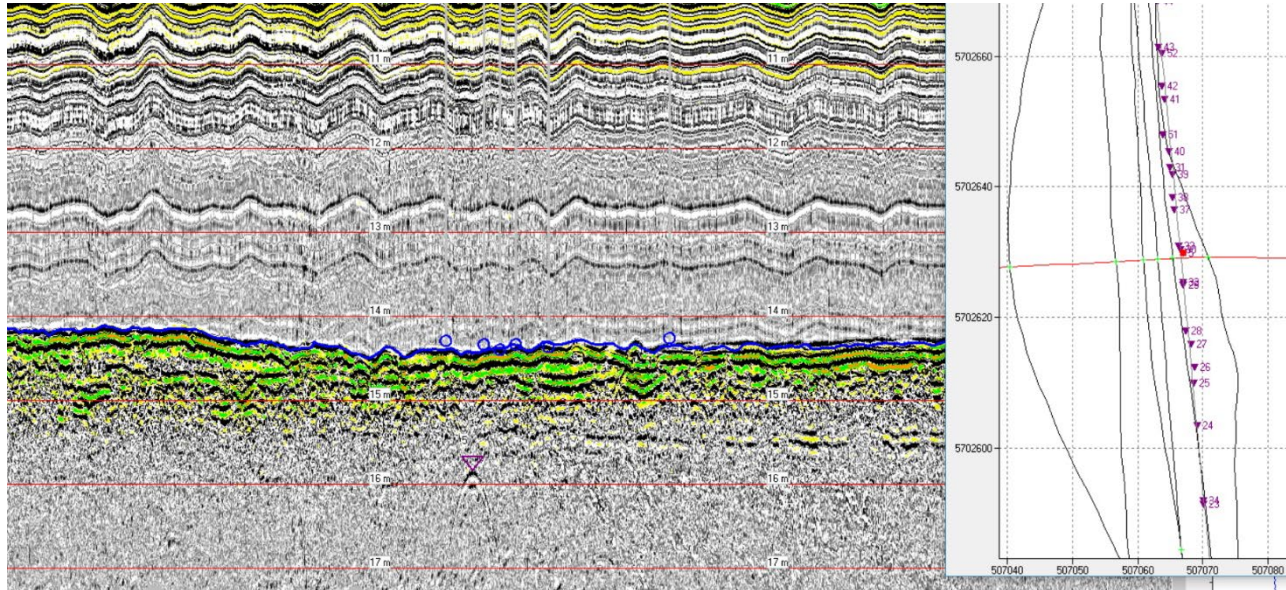
Our solutions: 3D Cable detection



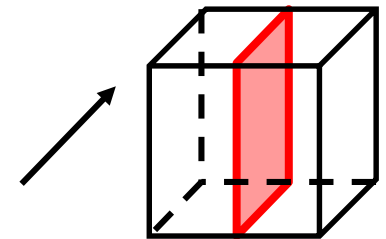
Our solutions: 3D Cable detection



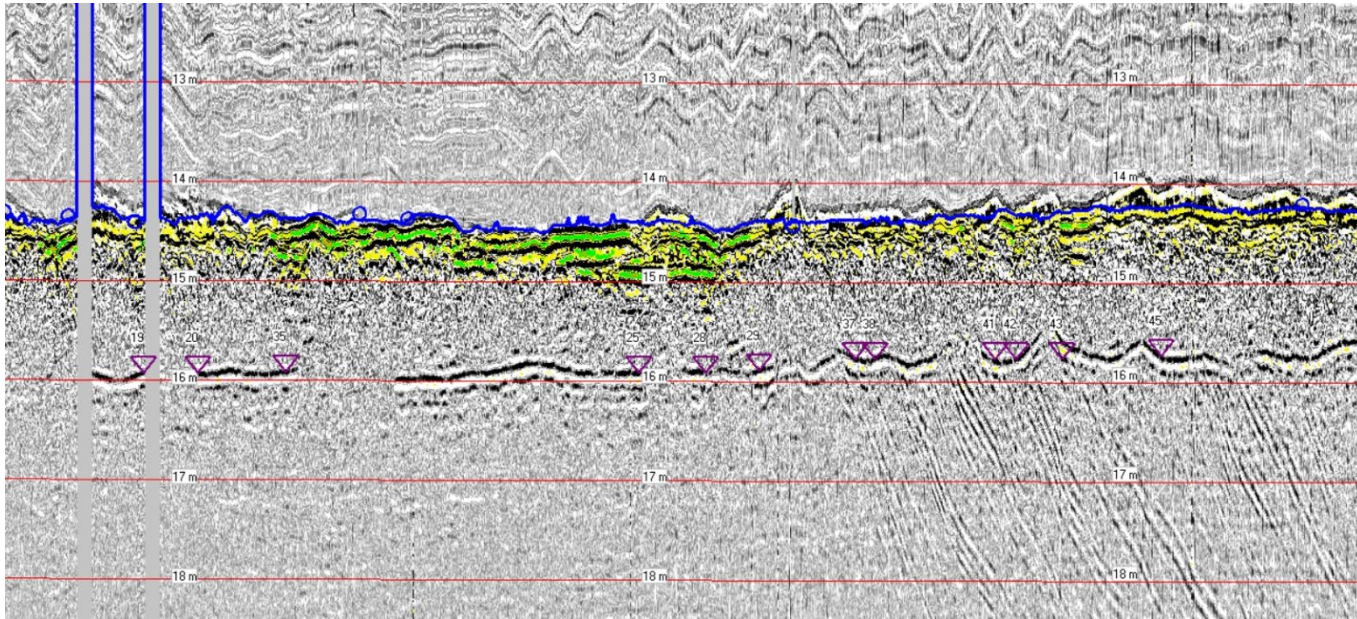
Our solutions: Cross Line Identification



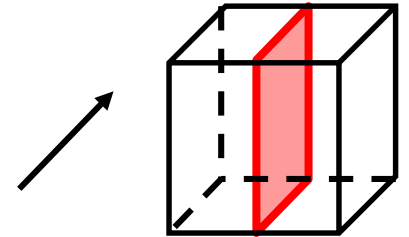
-Export Cable 22.5 cm dia
(cross section).
Height array above seafloor
app. 4 m



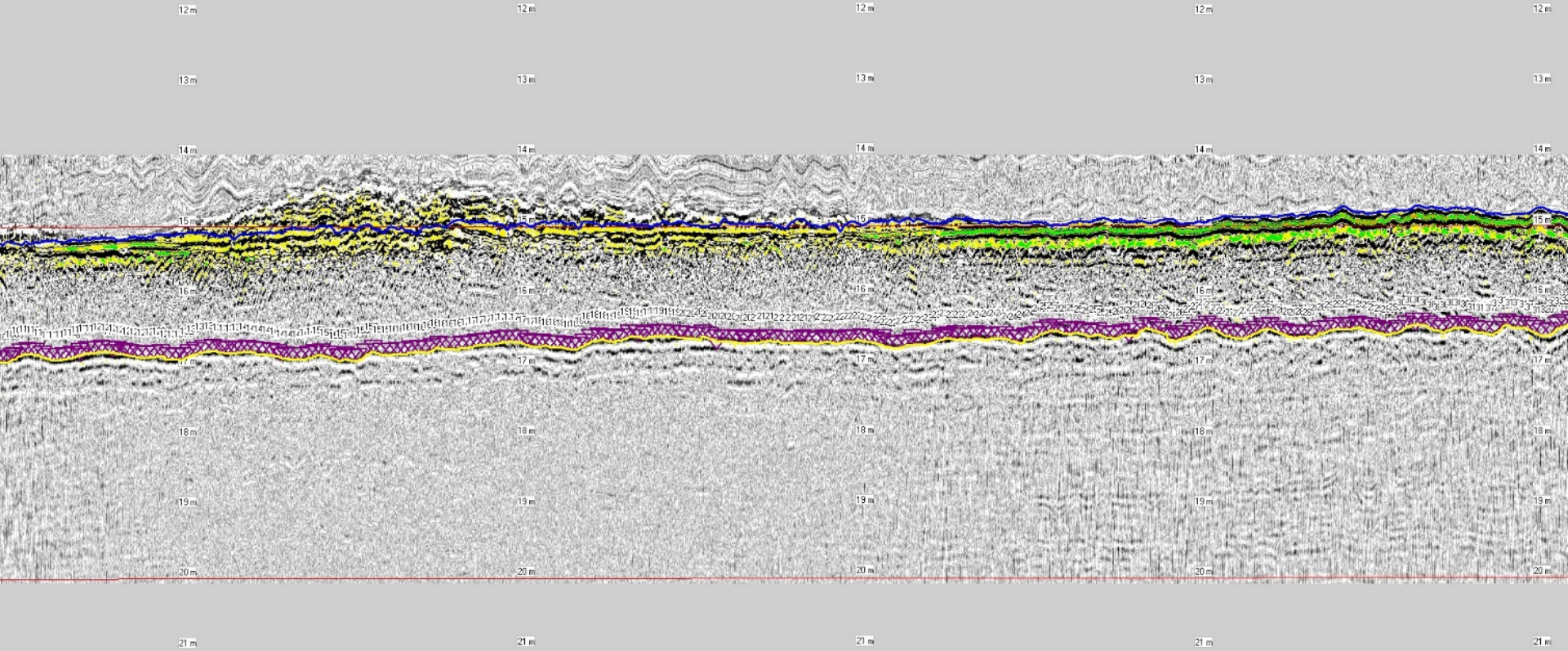
Our solutions: Parallel Lines



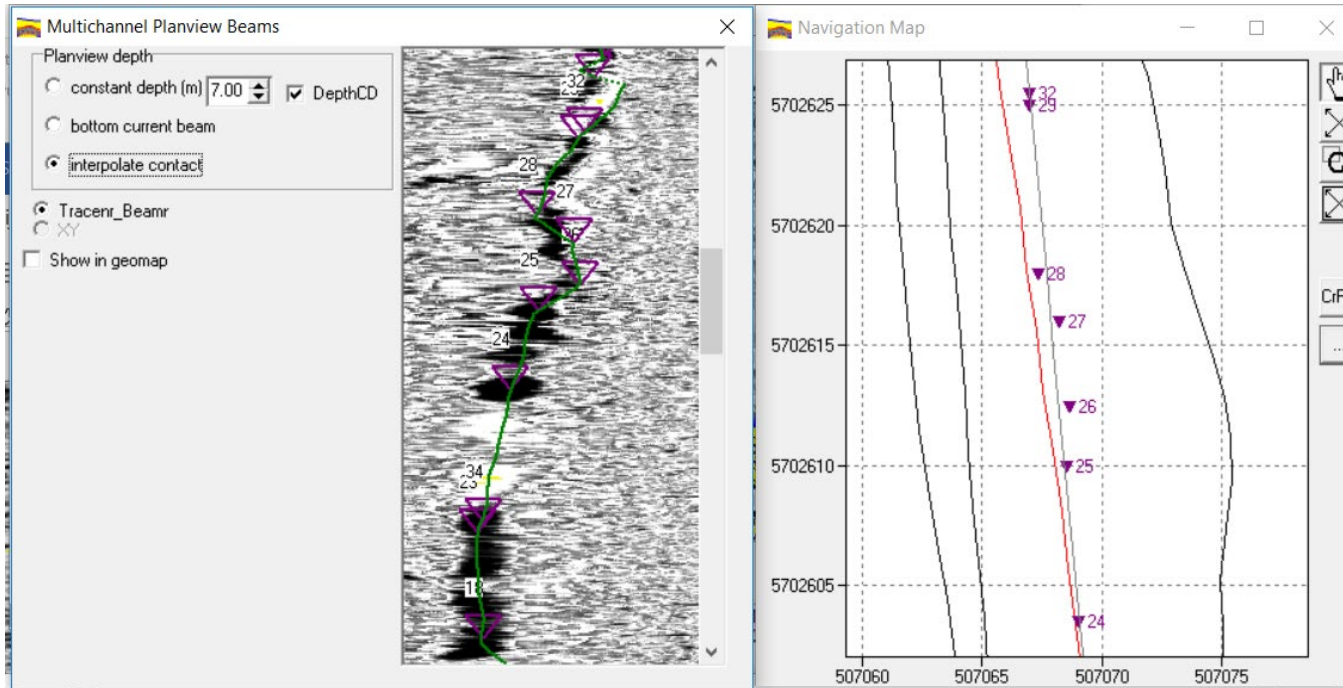
-Export Cable 22.5 cm dia:
longitudinal profile section
along cable, reprocessed



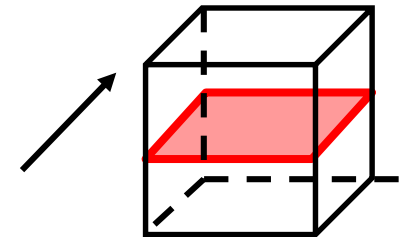
Our solutions: Parallel Lines



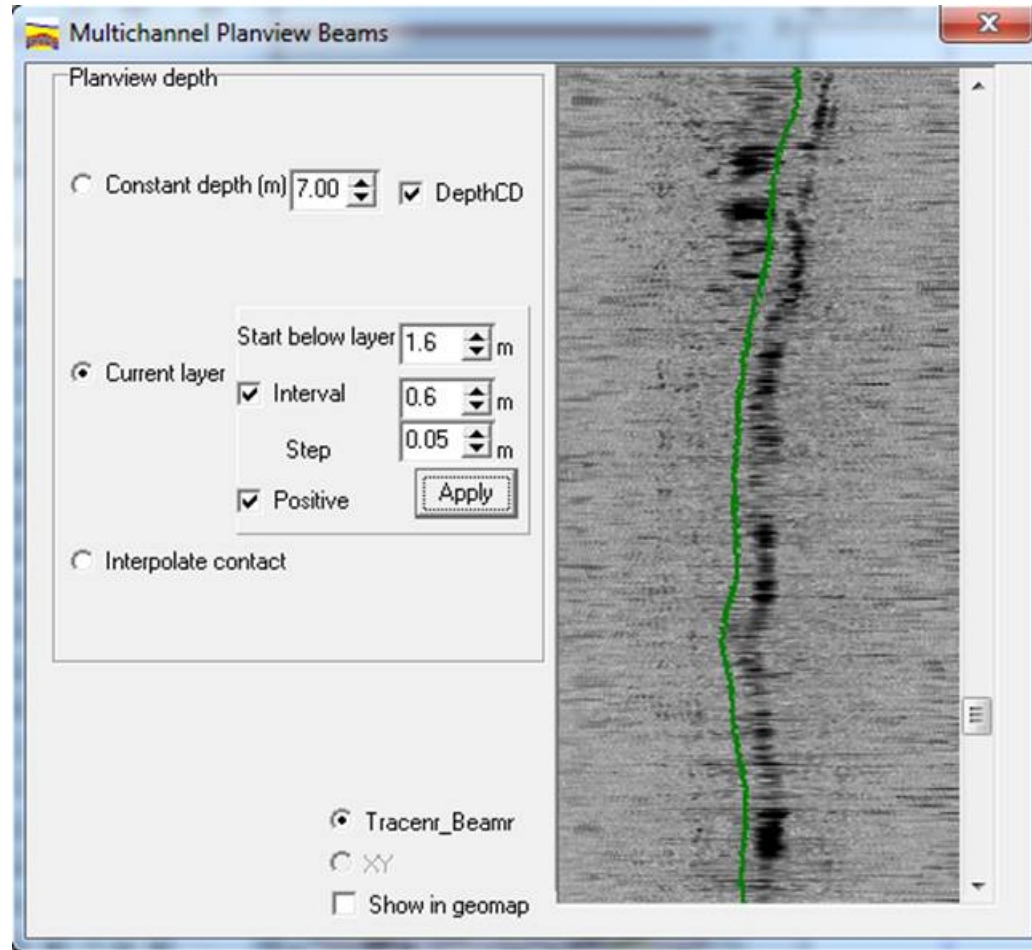
Our solutions: Applications



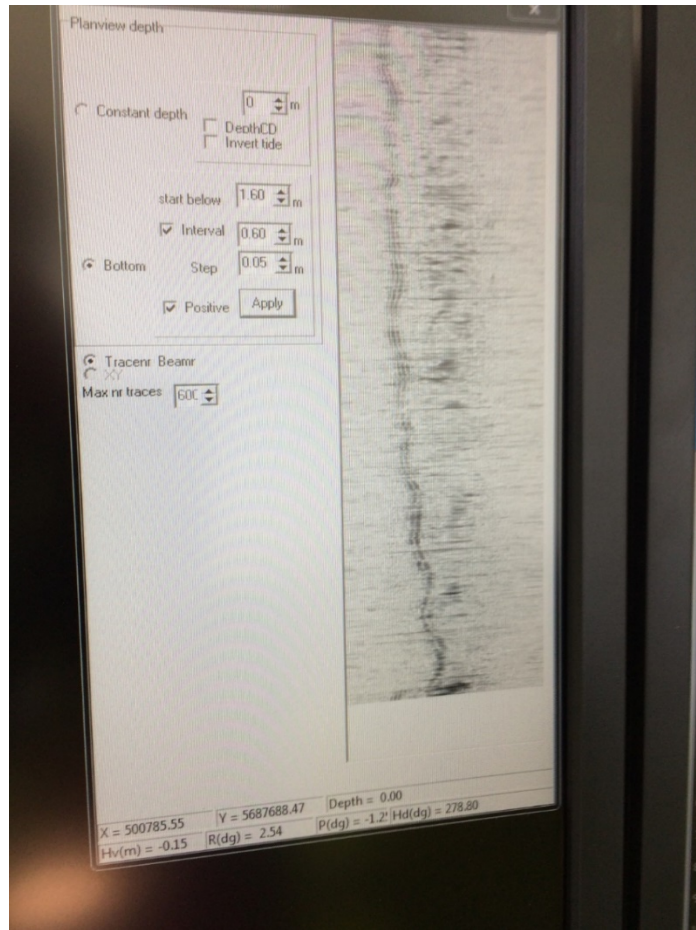
-Export Cable 22.5 cm dia
(longitudinal plan view
section)



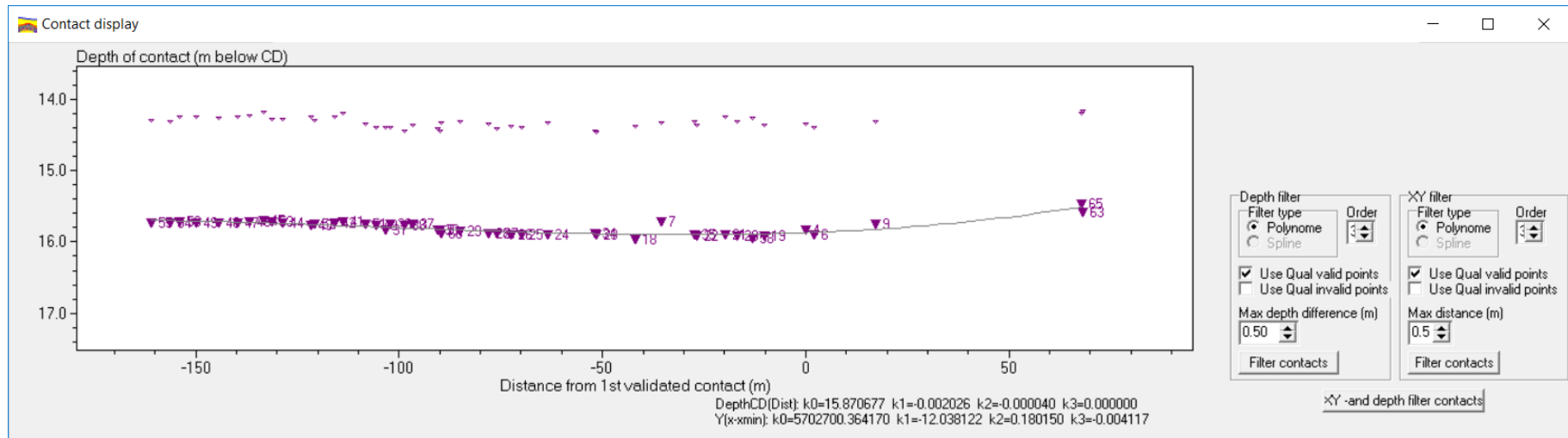
Our solutions: Cable Tracking



Our solutions: Real Time Cable tracking

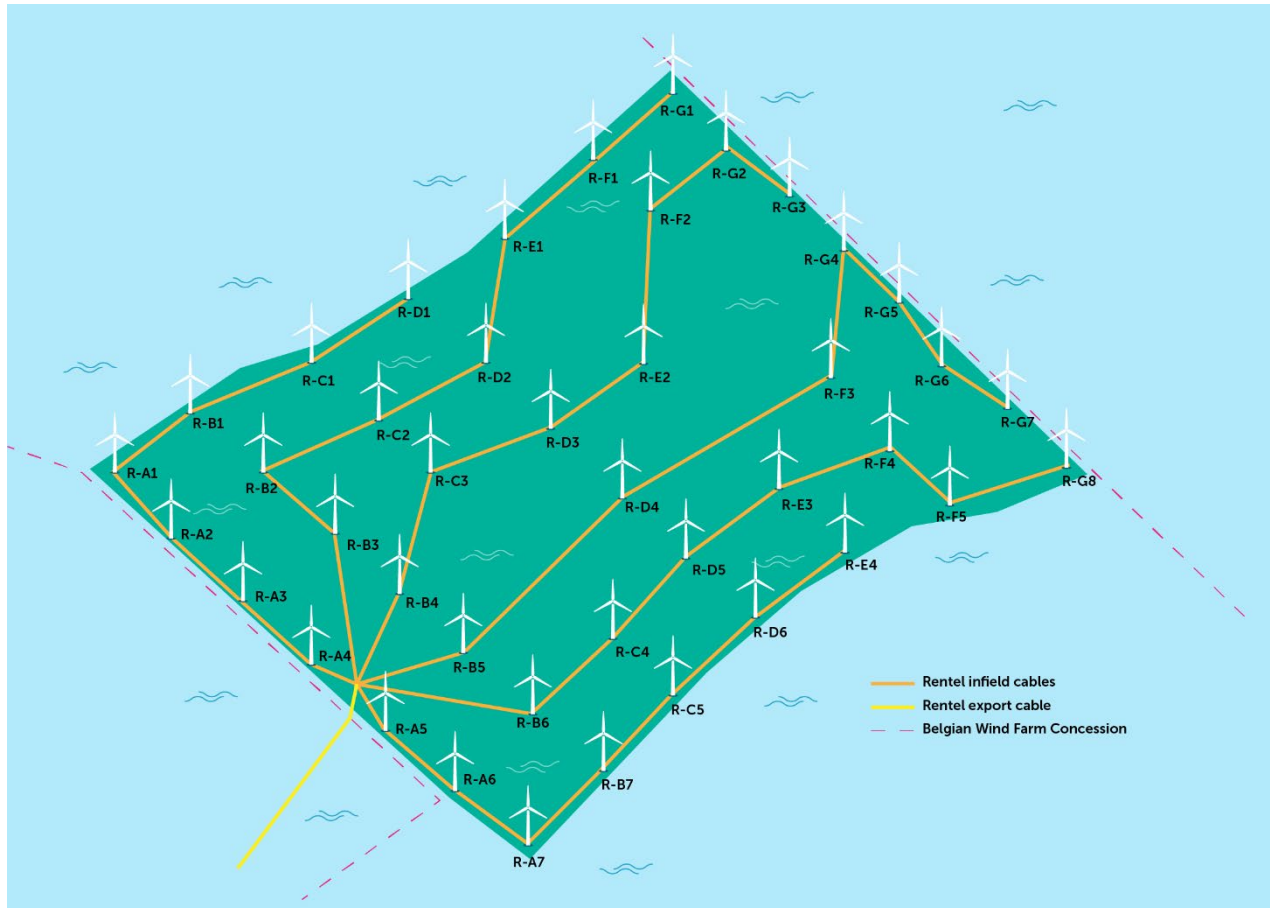


Deliverable: Depth of Coverage





Applications: Inter Array Cables



What can we see: Cables



Applications: Pipe line crossings

