

The Stema Systems Power over Ethernet sensor interface card makes it possible to connect any type of analog sensor to the Ethernet / Internet. Each card can interface up to 4 analog sensors (i.e. gravity / rotation sensor) or 2 pulse sensors (i.e. flowmeter). The internal Ethernet switch makes it possible to connect several sensor interface cards / GNSS receivers in one row. With the PoE+ integration there is no need for separate power & data cables to each sensor, which minimizes the amount of cables needed.

A built in short circuit protection prevents the sensors from being damaged when a cable is broken and the cause of the problem can easily be found.



#### TECHNICAL SPECIFICATIONS:

PoE sensor interface making it possible to communicate over

- ▼ TCP/IP (client / server mode)
- ▼ UDP
- ▼ Virtual serial port

4 analog inputs:

- ▼ 16 bits Analog/digital converter
- ▼ 4-20mA sensor input
- ▼ 20Hz Sampling rate
- ▼ Configurable offset & scale factor
- ▼ Output results of all 4 sensors in 1 ASCII string

2 high frequency puls inputs:

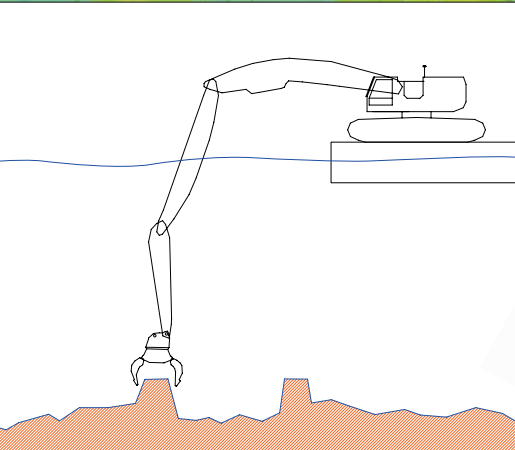
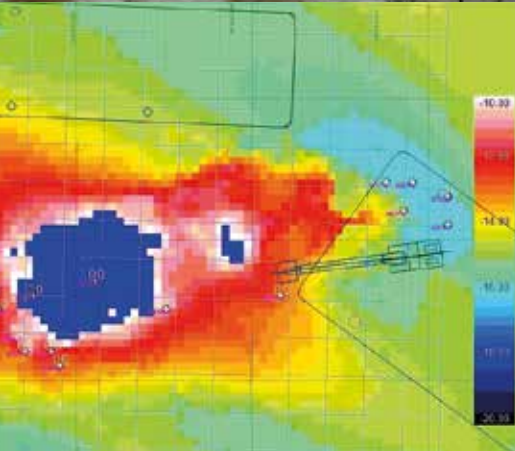
- ▼ 20 kHz max update rate
- ▼ 1 Counter per input
- ▼ 1 combined counter counting up or down depending on phase shift between the two pulses
- ▼ Output result of all separate counters in 1 ASCII string

PoE+ (IEEE 802.3at-2009) input port supplying both power & Ethernet to the device

- ▼ Max power consumption 1.5W + approx. 0.5W / analog sensor

PoE+ (IEEE 802.3at-2009) output port supplying both power & Ethernet to external devices

- ▼ Current limitation of 660mA per pair, (max 36W when powered on 2 pairs with 56VDC)



## CONFIGURABLE VIA WEBBROWSER:

Update rate output: at 5 / 10 / 15 / 20 Hz

Moving average filter: 7 / 9 / 11 / 13 values (analog input only)

## STANDARD AVAILABLE SENSORS

6060

- Resolution <0.005 deg
- Range: pitch -30°/+30°, Roll -30°/+30°
- Subsea housing

0160

- Resolution <0.01 deg
- Range: pitch 0°-160° or -80° to +80°
- Subsea housing

Several flowmeters / or other sensors on request

## OPTIONAL ACCESSORIES:

Subsea housing

- 3 outputs M18 x1.5 for direct fit with hydraulic tubes or subsea connectors
- Can be pre-installed with pitch / roll sensors
- 10mm thick RVS for rough applications
- Sealing tested at 100m water depth

Subsea cables

- Several solutions for subsea cabling possible

