

Geo consulting

Geological and seismic analysis and project advise

Deliverables

- Pre-survey advise
- Processing
- Interpretation and reporting

Stema Geophysical Consulting has proven its added value many times.

Due to our hydrographical and geophysical experience the consultants know the best way to prepare and /or process your sub-bottom survey. Our approach guides you to an efficient and effective survey for the best results.

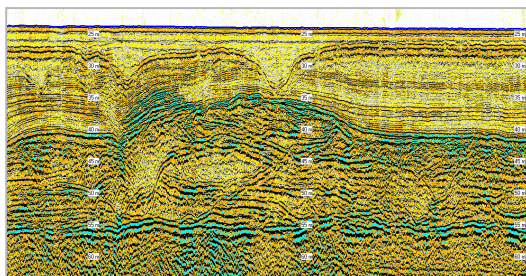
- Inventarisation i.e. desired result, methodology and equipment choice
- Initiation of survey i.e. mobilization, fine tuning and training
- Processing raw data
- Interpretation of data into established deliverables

Data processing can commence as soon as data has been acquired. Stema's consultants offer their **assistance** to their clients in the early stages of a (geo-seismic) project. Thereby establishing the appropriate project approach and the application of the relevant equipment, processing resulting in more efficient and accurate processing.

As a result the clients survey team is provided with the right tools to acquire the raw data in order to obtain the best quality result for further processing, which takes place in our office where the raw data will be processed by our **highly experienced geophysicists**.



Experienced Stema personel can assist in sparker and boomer surveys, both single- and multi-channel.



Silas record acquired with a boomer.

Key features

- Vast geophysical equipment knowledge
- Large pool of professionals processors
- On-site analysis pre-report

Related products

Silas	Geo Consulting
EBP	Winch
RheoTune	Survey Vessel
Object detection	Rental

Geo consulting

Geological and seismic analysis and project advise

Our team

Stema Systems has developed a market leading sub-bottom profiling methodology using a combination of uniquely designed equipment with in-house developed software, resulting in a system that can provide a host of sub-bottom analysis results catering to the clients' specific needs.

Over the past 30 years this combination of hardware and software has resulted in thorough insights into the sub-bottom in which we now consult. The way our team works is easy and reliable. Each project will be executed by a junior or medior geophysical consultant depending on the skills needed for the project and is always monitored by one of the senior geologists.

For each assignment a plan will be made in collaboration with the customer and internally approved by the senior geologists. The final client report will be signed off by the project consultant and the senior geologist. Each staff-member has at least 5 years of experience and holds a MSc Geology degree. Every employee at Stema also has knowledge of hydrological equipment and hydrographical field experience.

Our references

